

# GEOFF METZLER & ASSOCIATES PTY LTD

CONSULTING STRUCTURAL & CIVIL ENGINEERS

ABN 87 002 408 237

WWW.METZLER.COM.AU

**MILTON / ULLADULLA**  
SHOP 12  
97 PRINCES HWY  
MILTON NSW 2538  
P: 02 4455 5515  
email: [office@metzler.com.au](mailto:office@metzler.com.au)

**BEGA OFFICE**  
204 CARP STREET  
BEGA NSW 2550  
P: 02 4455 5515  
email: [office@metzler.com.au](mailto:office@metzler.com.au)

**BATEMANS BAY**  
126 BEACH ROAD  
BATEMANS BAY NSW 2538  
P: 02 4455 5515  
email: [office@metzler.com.au](mailto:office@metzler.com.au)

PROJECT: EDMISTON JONES

ADDRESS: 108-114 RAWLINSON STREET, BEGA

DRAWING TITLE: CIVIL DETAILS

JOB NUMBER: M10487

PAGE NUMBER: 1 OF 22

APPROVED BY  JACK METZLER B.E. MIE. AUST. C.P. ENG.

DATE	DESCRIPTION	ISSUE	DRAWN BY
25.10.2023	DA ISSUE	A	BC
22.01.2025	EASEMENT AMENDMENT	B	MW

GENERAL NOTES

- G1 Do not obtain dimensions by scaling these drawings. Only principal structural dimensions are shown. All dimensions are in millimetres
- G2 Read these drawings in conjunction with all other contract documents and the requirements of the relevant building authority. Before proceeding with work clarify any discrepancies, verify all setting out dimensions
- G3 Maintain the structure in a stable condition during construction. Do not exceed the design live loads shown or cause any element to be overstressed

G4 Design loads in accordance with AS1170 :		
<u>Live load</u>		<u>Wind load</u>
Domestic	1.5kPa	Wind velocity Vu50,Vp41,Vs38 m/s
Offices, corridor, parking	3kPa	Structural importance multiplier Mi = 1
Balconies,stairs	4kPa	Terrain category = 2 - Rural
Factories, plantrooms, shops	5kPa	1 - Urban
Roofs	0.25kPa	

- G5 Engineering design of Class 1 and Class 10 structures is in accordance with NCC 2022 BCA Volume 2

FOUNDATIONS

- F1 Footings have been designed for an allowable bearing pressure of 150 kPa. Obtain approval for the proposed foundation material before placing concrete.
- F2 The design only applies for ground and foundation levels as shown on the drawings.
- F3 Site classification as to AS 2870 M foundation material CLAY. Backfill foundation walls so that the level of fill on one side of the wall is never more than 450 above the level on the other side, except where detailed retaining walls are used.

EARTHWORKS

- E1 Strip topsoil and organic material from subgrade.
- E2 Cut and fill site to design level -Where controlled fill is specified- select fill to be placed in max. 200mm layers and compacted to min. 95% Standard Proctor Density to AS 1289.
- E3 Provide 450 diameter or square piers at 2000mm centres to natural subgrade under perimeter ribs. Provide similar piers under internal ribs where fill beneath ribs exceeds 200mm uno.
- E4 If shale is exposed at cut area then all piers must be founded on shale.
- E5 Surface drainage shall be provided as required to prevent ponding and divert runoff away from slab and footings.

MASONRY NOTES

- M1 All workmanship and materials in accordance with AS 3700 and AS 2733 .
- M2 Mortar shall be freshly prepared, uniformly mixed in the following ratio: 1:1/10:3 cement, lime, sand in accordance with ASA 123 and AS 3700 clause 2.2.2.
- M3 All perpends,except where required for weepholes,are to be fully filled with mortar.
- M4 Bottom course of blocks to have inspection openings to all cores to be grouted. Thoroughly clean all cores prior to reinforcement placing. Tie vertical steel to starters.
- M5 Grout all cores with grout strength grade 15. 150mm slump. Max. free drop in any one pour to be 1 metre. Stop pour 50 below top of block
- M6 Provide vertical control joints in walls at 8metre max. centres uno.

RETAINING NOTES

- R1 For timber retaining walls, all steel posts are galvanised 100UC14.8 sections uno. All corner posts are galvanised double 100PFC sections uno.
- R2 Where retaining walls are subject to long term surcharge, consult engineer prior to construction.

CONCRETE

- C1 Conform to AS 3600 and the ACSE Concrete Specification except where varied by the contract documents.
- C2 Provide concrete with a strength of:  
f'c =20 MPa footings f'c= 25 MPa Slab f'c= 32 MPa Polished Slab  
f'c =20 MPa Retaining Wall Core Fill f'c =40MPa External Coastal Slab  
maximum slump of 80.  
maximum aggregate size of 20.  
cement type A.  
no admixtures or breccia.
- C3 Sizes of concrete elements do not include thickness of applied finishes.
- C4 Beam depths are written first and include slab thickness.
- C5 Do not make any construction joints, holes or chases in the concrete elements unless shown or approved by the Engineer.
- C6 Do not place pipes or conduits within the concrete cover to reinforcement.

C7 Reinforcement notation :		
N - Grade D500N deformed bar to AS 4671		T - top of element
F - Hard drawn wire reinforcing fabric to AS 4671		B - bottom
R - Grade 230 R hot rolled plain bars to AS 4671		ew - each way
S - Grade 230 S hot rolled deformed bars to AS 4671		c/s - courses
W - Hard drawn plain wire to AS 1303		uno - unless noted otherwise.
Example: 8-N16@200T denotes 8 deformed bars of 16 diameter at 200 centres placed in the top of the element.		

C8 Provide clear concrete cover to reinforcement as follows: uno.			
<u>Element</u>	<u>Interior</u>	<u>Exterior</u>	<u>Exterior Against Ground</u>
Footings			50
Columns Pedestals	35	75	
Slabs, Walls	20	40	30 on membrane
Beams	25	65	65
Blockwork 50mm from appropriate outside face			
For slab within 1km from the coast, provide concrete f'c = 32 MPa and 65 cover to exterior exposed surface.			

- C9 Use maximum bar chair spacing of 60 diameters for supporting bars and 750 for fabric.
- C10 Provide laps only at locations shown unless otherwise approved by the Engineer.
- C11 For oblong fabrics, place top fabric main wires uppermost and bottom fabric main wires lowermost in direction of arrows.
- C12 Supply and lay fabric in flat sheets. Overlap first and second cross wires of each sheet by 30 at laps.
- C13 Do not weld reinforcement unless shown or approved by the Engineer.
- C14 Tie all unsupported bars to N12@300 all laps 450.
- C15 Do not build brick or block work on suspended work until all shoring has been removed.
- C16 Prop cantilever slabs and beams from a firm support for a minimum of 28 days.
- C17 Provide the Engineer with 24 hours notice of reinforcement being ready for inspection. Do not order concrete until reinforcement has been approved.
- C18 Reinforcement is shown diagrammatically and not necessarily in true position.
- C19 All concrete shall be placed and cured in accordance with Section 19 AS 3600. Where curing compound is used it must be applied:  
(A) onto slabs within 2 hours of finishing operation.  
(B) onto walls and columns immediately after removal of framework.
- C20 Horizontal framework shall be stripped when approved by the Engineer.
- C21 Slabs and beams shall bear on only the beam, walls etc. shown on the drawings; all other building elements shall be kept 15mm clear from soffits of structure.
- C22 Where slabs or beams bear on masonry, the top course shall be level, smooth and covered with slip joint as detailed uno.
- C23 Slab reinforcement has been provided for minor degree of crack control. Consult engineer where moderate or strong degree of crack control is required.

STEELWORKS NOTES GENERAL

- S1 All workmanship and materials shall be in accordance with current editions of SAA codes AS4100, AS1554 and ACSE Steel Specification,except as varied by the contract documents
- S2 Structural grade (Fy 300MPa) quality steel shall be used throughout unless noted otherwise
- S3 Submit all shop drawings to the Engineer for approval of general arrangement of structural elements before commencing fabrication
- S4 Steelwork not to be encased or not otherwise noted shall be given one coat of approved metallic primer at least 48 hours before dispatch
- S5 Steelwork to be encased in concrete shall not be painted but shall be given one coat of cement wash. Members to be wrapped with No. SL62 fabric or 5mm wire at 150mm pitch and encased in 20MPa concrete with minimum 50mm cover
- S6 The contractor shall provide and employ any additional temporary bracing etc. necessary to adequately and safely hold steelwork in position during construction
- S7 Proprietary items (e.g. purlins, bolts etc.) shall be installed in accordance with manufacturers specifications uno
- S8 All exposed steelwork to be hot dipped galvanised.

STEELWORK

- S9 Unless noted otherwise use:  
10mm thick gusset, fin and end plates, fully welded.  
M20 dia blackbolts  
6mm continuous fillet weld made with general purpose steel electrodes in accordance with AS 1554
- S10 Chip all welds free of slag
- S11 Do not grout under base plates until first level steelwork is plumb and fixed by welding or bolting
- S12 Bolts to be grade 4.6 Metric Hexagon Commercial Bolts to AS 1111 uno. H.S. Bolt denotes grade 8.8 highstrength steel bolts to AS 1252 - bolting category 8.8/S = snug tight. 8.8/T = fully tensioned.
- S13 All cold formed steel shall be in accordance with AS 1538.
- S14 Allow minimum 150 end bearing for all galintels uno.

TIMBER

- T1 All timber construction to conform with AS 1684 in addition to the details shown.

T2 Minimum edge distances for bolted connections (unless noted otherwise):		
<u>Bolt size</u>	<u>End grain</u>	<u>Cross grain</u>
M12	75	50
M16	100	70

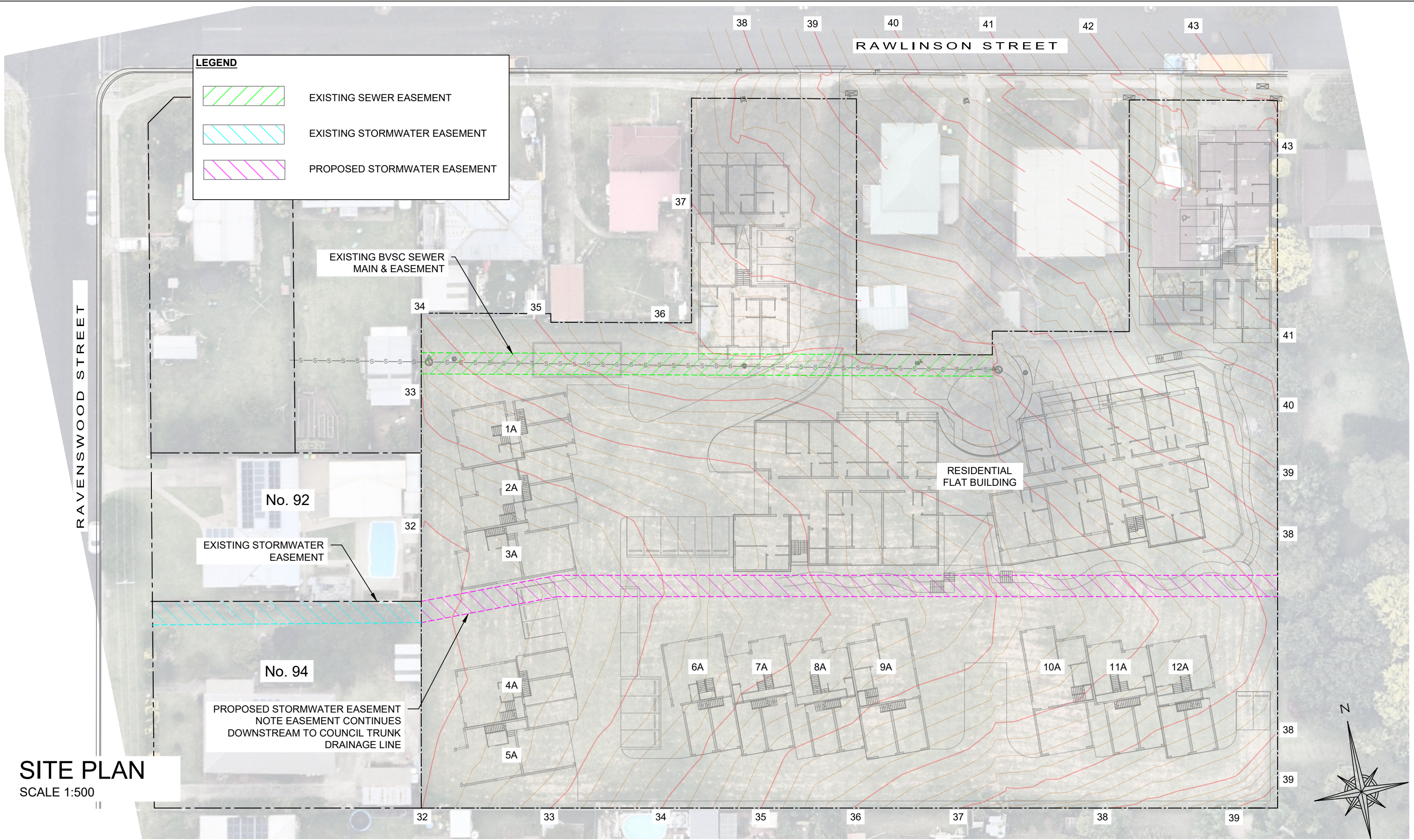
- T3 Bolts to be grade 4.6 Metric Hexagon Commercial Bolts to AS 1111 uno

TIE DOWN

- TD1 Roof sheet to battens in accordance with roof sheet manufacturers specification.
- TD2 Battens to rafters with 2-3.75 dia x 100 deformed nails, or 1 No 14 Type 17 Bugle screw, 50 embedment.
- TD3 Trusses or rafters to top plate or beam with 2 framing anchors per connection. use 4-2.8 dia x 30 flathead nails per member.
- TD4 Roof beam and lintels to stud frame (double stud) with 2-30 x 0.8 galvanised straps each end. Use 6-2.8 x 30 flathead nails each end. OR certified stud screw with 6kN capacity per stud.
- TD5 Top plates to studs with 30 x 0.8 galvanised strap every stud. Use 4-2.8 x 30 flathead nails each end, or looped strap ties, 4 nails per end. OR certified stud screw with 5kN capacity.
- TD6 Top plates to lintels with 30 x 0.8 galvanised strap @450 crs OR certified stud screw with 5kN capacity. Use 4-2.8 x 30 flathead nails each end, or looped strap ties, 4 nails per end.
- TD7 Bottom plate to studs with 30 x 0.8 galvanised strap every 2nd stud. Use 4-2.8 x 30 flathead nails each end. OR certified stud screw with 5kN capacity. Studs and lintel support must be strapped or screwed.
- TD8 Bottom plate to floor structure with 2 No 14 Type 17 screws, or 30 x 0.8 galvanised strap @ 900 crs with 4 nails per end.  
Note : At bracing panels fix bottom plate to each joist. Fix bottom plate to slab M10-900 bolts, adjacent to strapped studs. 1-M10 bolt to each side of bracing panels.
- TD9 Joist to bearers with 2-3.75 dia x 100 skew nails. Fix Joists to Bearers with 1-framing anchor on both sides of stud tie down points. Use 4-2.8 dia x 30 flathead nails per member.
- TD10 External Bearers to be bolted down to Footings at each Pier.
- TD11 At each end of Bracing Panels in Internal walls , Joists require Looped Strap tie down or 1 M10 bolt to Bearers and Bearers require tie down to footings similar to External Bearers. Joists with bracing panels across them require Looped Strap tie down at each end.

AMENDMENTS	DATE	ISSUE	<div>GEOFF METZLER &amp; ASSOCIATES PTY LTD</div> <div>CONSULTING STRUCTURAL &amp; CIVIL ENGINEERS</div> <div>SHOP 12, 97 PRINCES HIGHWAY MILTON NSW 2538</div> <div>P: 02 4455 5515</div> <div>EMAIL <a href="mailto:office@metzler.com.au">office@metzler.com.au</a>   ABN 87 002 408 237</div> <div>BATEMANS BAY - P: 02 4455 5515   BEGA - P: 02 4455 5515</div>	PROJECT - EDMISTON JONES			
DA ISSUE	25.10.2023	A		ADDRESS - 108-114 RAWLINSON STREET, BEGA			
				DRAWING - NOTES		SCALE: AS SHOWN @ A3 DRAWN BY: BC	REVISION <div>A</div>
				JOB NO - M10487 Sheet No - 2			
				APPROVED - JACK METZLER - B.E. MIE. AUST. C.P. ENG.			





**SITE PLAN**  
SCALE 1:500

AMENDMENTS	DATE	ISSUE
DA ISSUE	25.10.2023	A
EASEMENT AMENDMENT	22.01.2025	B

**GEOFF METZLER & ASSOCIATES** PTY LTD  
CONSULTING STRUCTURAL & CIVIL ENGINEERS

SHOP 12, 97 PRINCES HIGHWAY MILTON NSW 2538  
P: 02 4455 5515  
EMAIL [office@metzler.com.au](mailto:office@metzler.com.au) | ABN 87 002 408 237  
BATEMANS BAY - P: 02 4455 5515 | BEGA - P: 02 4455 5515

**PROJECT - EDMISTON JONES**  
ADDRESS - 108-114 RAWLINSON STREET, BEGA

**DRAWING - SITE PLAN**

JOB NO - **M10487** Sheet No - **3**

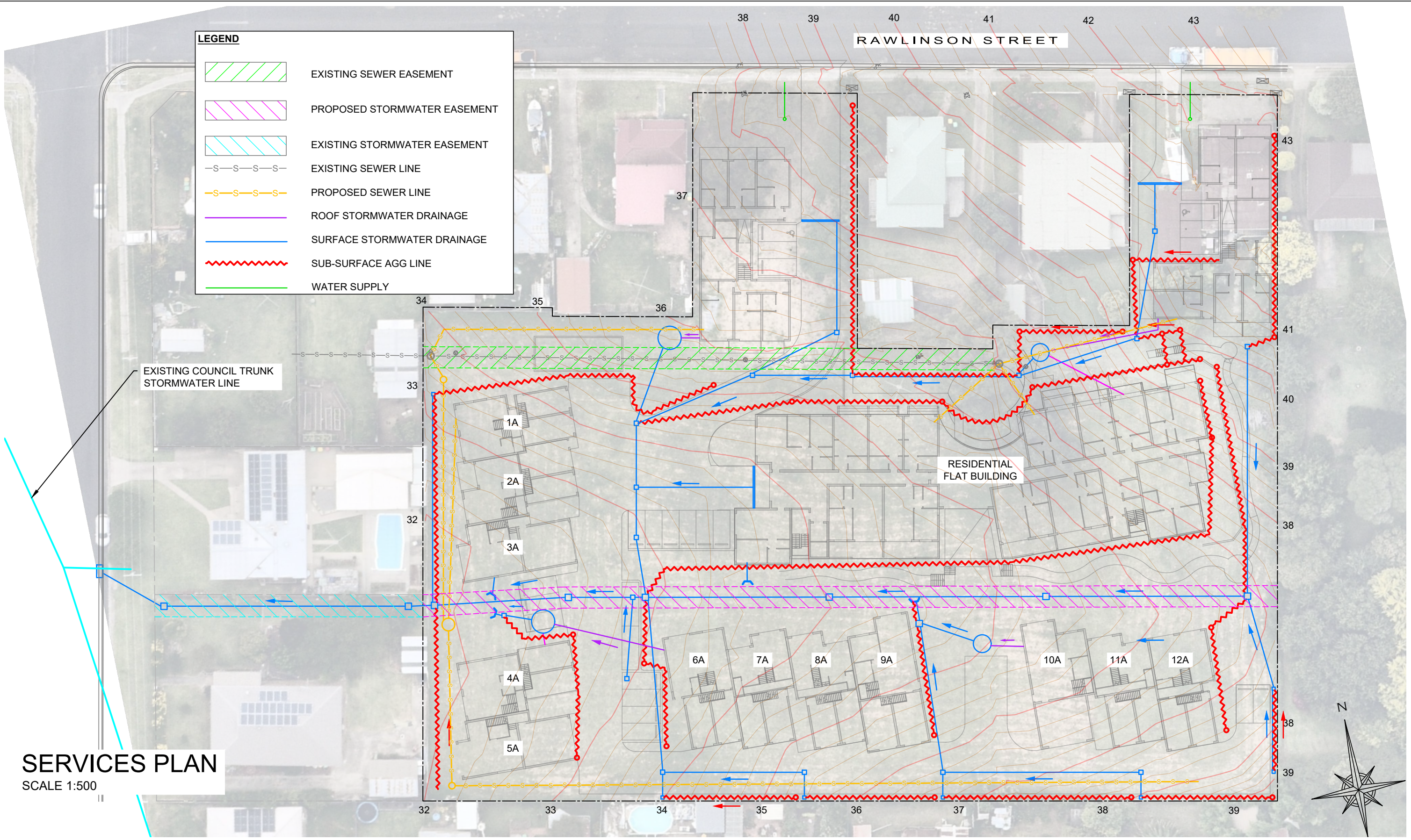
APPROVED - JACK METZLER - B.E. MIE. AUST. C.P. ENG.

SCALE:  
AS SHOWN @ A3  
DRAWN BY:  
BC

REVISION

**B**





AMENDMENTS	DATE	ISSUE
DA ISSUE	25.10.2023	A
EASEMENT AMENDMENT	22.01.2025	B

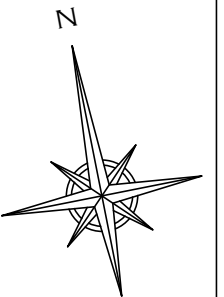
**GEOFF METZLER & ASSOCIATES** PTY LTD  
CONSULTING STRUCTURAL & CIVIL ENGINEERS

SHOP 12, 97 PRINCES HIGHWAY MILTON NSW 2538  
P: 02 4455 5515  
EMAIL [office@metzler.com.au](mailto:office@metzler.com.au) | ABN 87 002 408 237  
BATEMANS BAY - P: 02 4455 5515 | BEGA - P: 02 4455 5515

PROJECT - EDMISTON JONES		
ADDRESS - 108-114 RAWLINSON STREET, BEGA		
DRAWING - SERVICES PLAN	SCALE: AS SHOWN @ A3 DRAWN BY: BC	REVISION
JOB NO - M10487    Sheet No - 4		B
APPROVED - JACK METZLER - B.E. MIE. AUST. C.P. ENG.		



DRIVEWAY PLAN  
SCALE 1:500



AMENDMENTS	DATE	ISSUE
DA ISSUE	25.10.2023	A

GEOFF METZLER & ASSOCIATES PTY LTD  
CONSULTING STRUCTURAL & CIVIL ENGINEERS

SHOP 12, 97 PRINCES HIGHWAY MILTON NSW 2538  
P: 02 4455 5515  
EMAIL [office@metzler.com.au](mailto:office@metzler.com.au) | ABN 87 002 408 237  
BATEMANS BAY - P: 02 4455 5515 | BEGA - P: 02 4455 5515

PROJECT - EDMISTON JONES

ADDRESS - 108-114 RAWLINSON STREET, BEGA

DRAWING - DRIVEWAY PLAN

JOB NO - M10487 Sheet No - 5

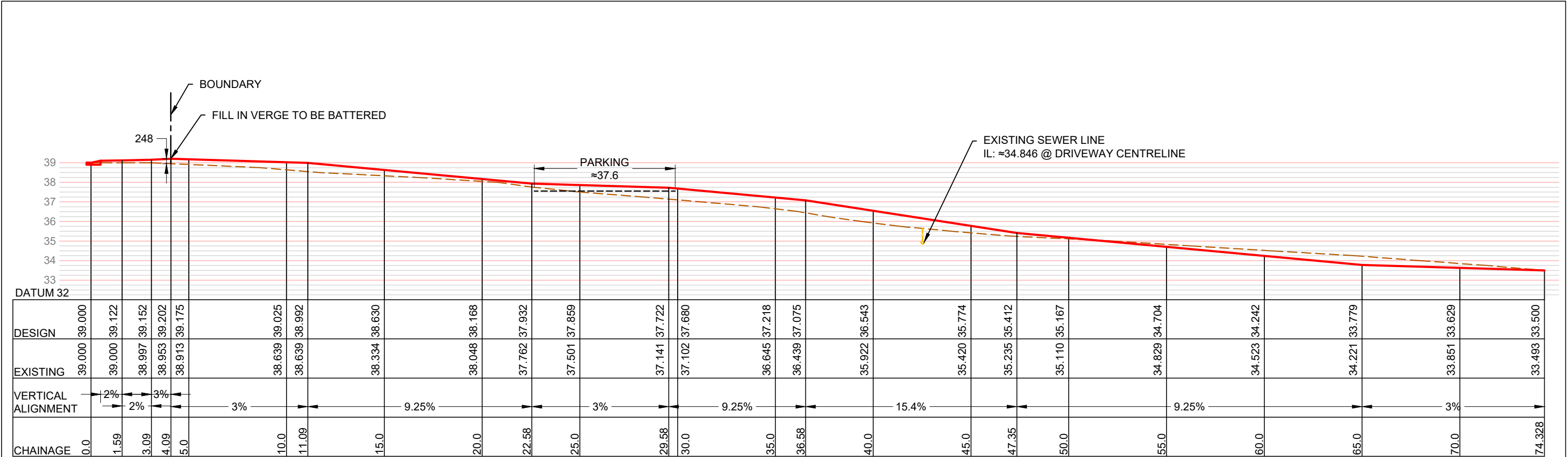
APPROVED - JACK METZLER - B.E. MIE. AUST. C.P. ENG.

SCALE:  
AS SHOWN @ A3  
DRAWN BY:  
BC

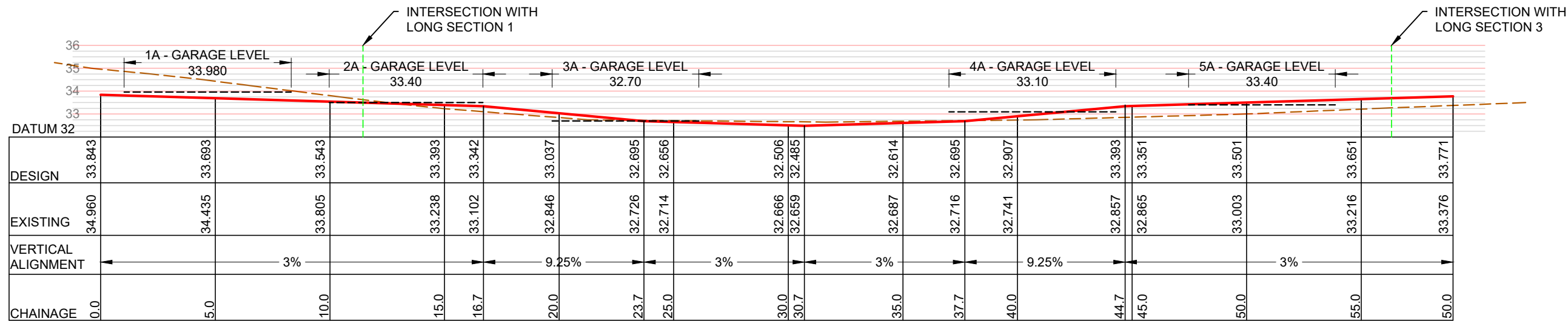
REVISION

A





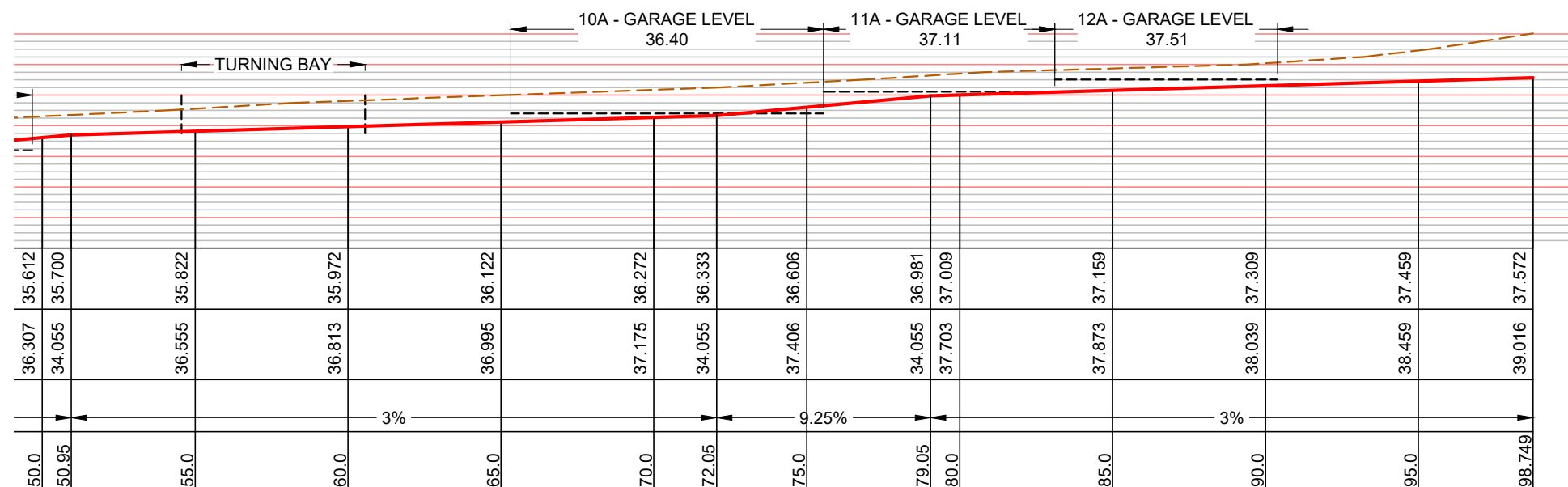
DRIVEWAY LONG SECTION 1  
SCALE 1:200



DRIVEWAY LONG SECTION 2  
SCALE 1:100

AMENDMENTS	DATE	ISSUE	<div>GEOFF METZLER &amp; ASSOCIATES PTY LTD</div> <div>CONSULTING STRUCTURAL &amp; CIVIL ENGINEERS</div> <div>SHOP 12, 97 PRINCES HIGHWAY MILTON NSW 2538</div> <div>P: 02 4455 5515</div> <div>EMAIL <a href="mailto:office@metzler.com.au">office@metzler.com.au</a>   ABN 87 002 408 237</div> <div>BATEMANS BAY - P: 02 4455 5515   BEGA - P: 02 4455 5515</div>	PROJECT - EDMISTON JONES			
DA ISSUE	25.10.2023	A		ADDRESS - 108-114 RAWLINSON STREET, BEGA			
				DRAWING - LONG SECTION 1 & 2		SCALE: AS SHOWN @ A3 DRAWN BY: BC	REVISION  A
				JOB NO - M10487 Sheet No - 6			
				APPROVED - JACK METZLER - B.E. MIE. AUST. C.P. ENG.			

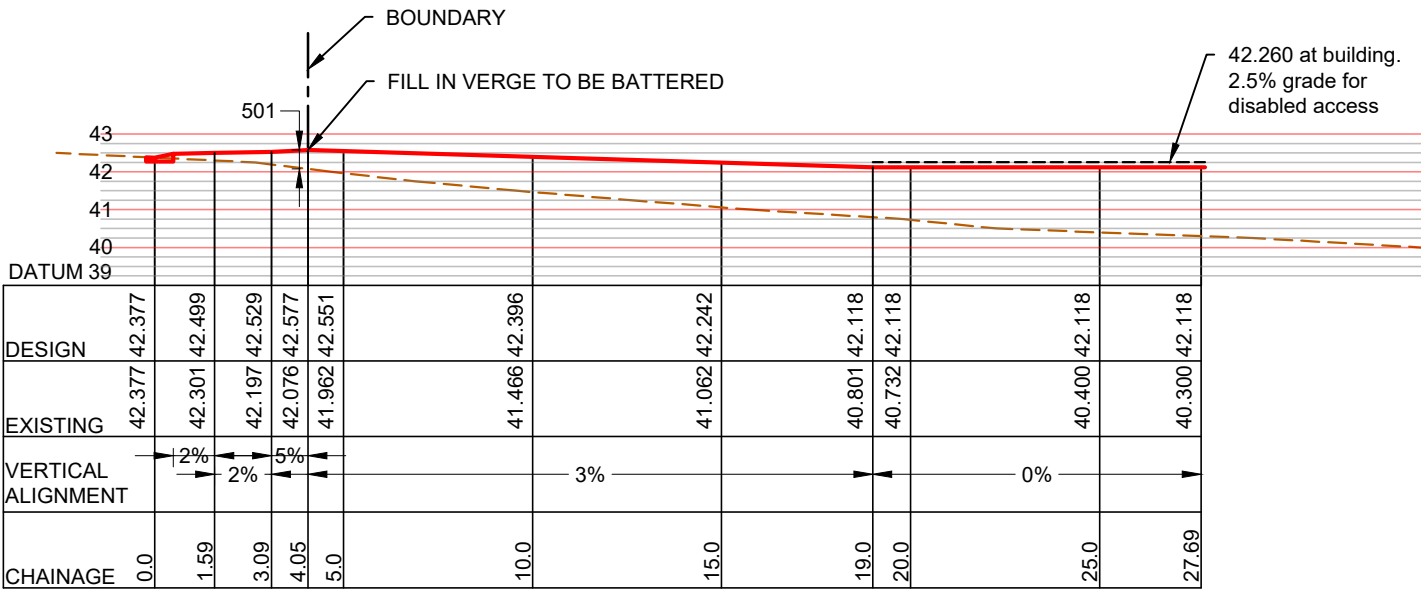




SCALE 1:200

AMENDMENTS	DATE	ISSUE	<div><div>GEOFF METZLER &amp; ASSOCIATES PTY LTD</div><div>CONSULTING STRUCTURAL &amp; CIVIL ENGINEERS</div><div>SHOP 12, 97 PRINCES HIGHWAY MILTON NSW 2538</div><div>P: 02 4455 5515</div><div>EMAIL <i>office@metzler.com.au</i>   ABN 87 002 408 237</div><div>BATEMANS BAY - P: 02 4455 5515   BEGA - P: 02 4455 5515</div></div>	PROJECT - EDMISTON JONES		
DA ISSUE	25.10.2023	A		ADDRESS - 108-114 RAWLINSON STREET, BEGA		
				DRAWING - LONG SECTION 3		
				SCALE: AS SHOWN @ A3		
				REVISION		
				DRAWN BY:		
				BC		
				A		
			JOB NO - M10487 Sheet No - 7			
			APPROVED - JACK METZLER - B.E. MIE. AUST. C.P. ENG.			

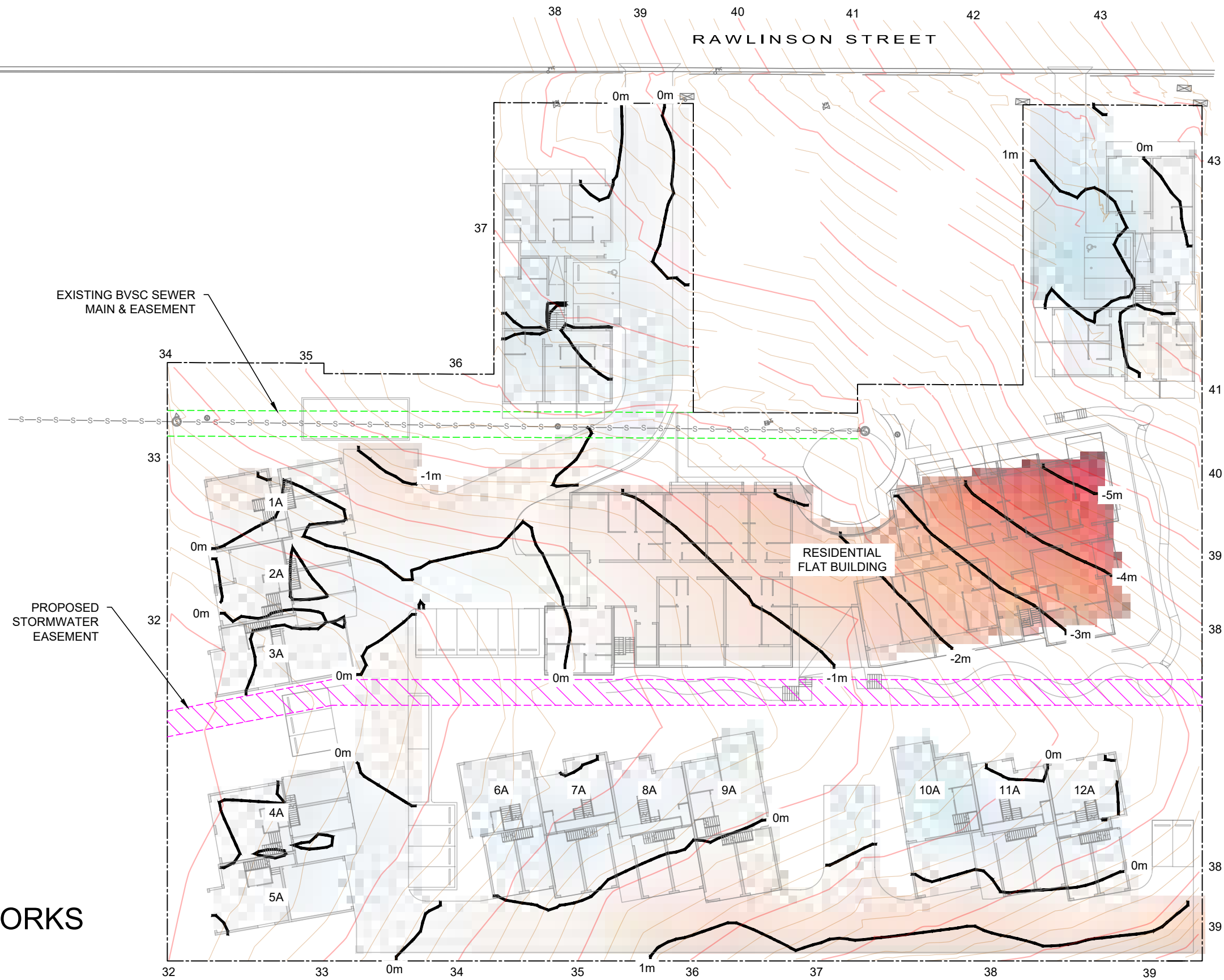




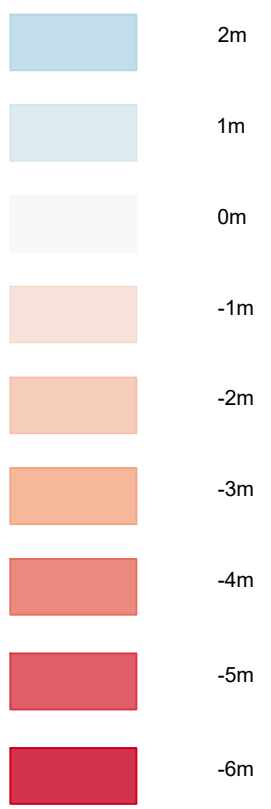
DRIVEWAY LONG SECTION 4  
SCALE 1:200

AMENDMENTS	DATE	ISSUE	<div>GEOFF METZLER &amp; ASSOCIATES PTY LTD</div> <div>CONSULTING STRUCTURAL &amp; CIVIL ENGINEERS</div> <div>SHOP 12, 97 PRINCES HIGHWAY MILTON NSW 2538</div> <div>P: 02 4455 5515</div> <div>EMAIL <a href="mailto:office@metzler.com.au">office@metzler.com.au</a>   ABN 87 002 408 237</div> <div>BATEMANS BAY - P: 02 4455 5515   BEGA - P: 02 4455 5515</div>			PROJECT - EDMISTON JONES		
DA ISSUE	25.10.2023	A				ADDRESS - 108-114 RAWLINSON STREET, BEGA		
						DRAWING - LONG SECTION 4		
						JOB NO - M10487 Sheet No - 8		SCALE: AS SHOWN @ A3
						APPROVED - JACK METZLER - B.E. MIE. AUST. C.P. ENG.		DRAWN BY: BC
								REVISION
								A





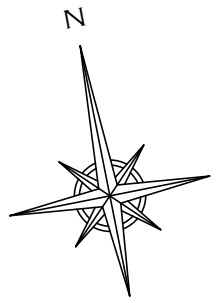
CUT/FILL LEGEND



NOTE APPROXIMATE VOLUMES:

- CUT: 3392
- FILL: 854
- NET CUT/FILL: -2538

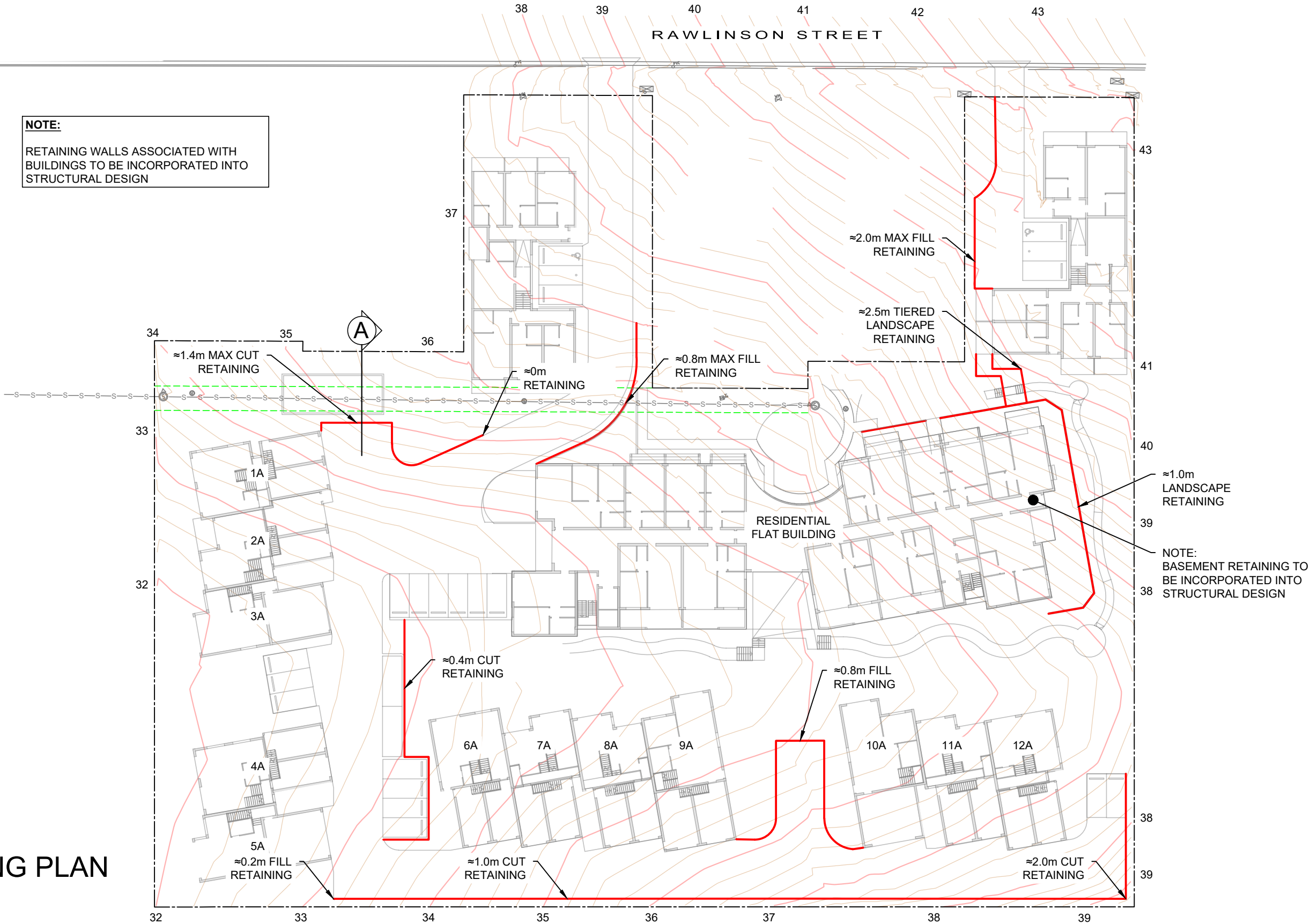
EARTHWORKS  
PLAN  
SCALE 1:500



AMENDMENTS	DATE	ISSUE	<div>GEOFF METZLER &amp; ASSOCIATES <small>PTY LTD</small></div> <div>CONSULTING STRUCTURAL &amp; CIVIL ENGINEERS</div> <div>SHOP 12, 97 PRINCES HIGHWAY MILTON NSW 2538</div> <div>P: 02 4455 5515</div> <div>EMAIL <a href="mailto:office@metzler.com.au">office@metzler.com.au</a>   ABN 87 002 408 237</div> <div>BATEMANS BAY - P: 02 4455 5515   BEGA - P: 02 4455 5515</div>	PROJECT - EDMISTON JONES			
DA ISSUE	25.10.2023	A		ADDRESS - 108-114 RAWLINSON STREET, BEGA			
				DRAWING - EARTHWORKS PLAN		SCALE: AS SHOWN @ A3	REVISION  A
				JOB NO - M10487		DRAWN BY: BC	
				Sheet No - 9			
				APPROVED - JACK METZLER - B.E. MIE. AUST. C.P. ENG.			



**NOTE:**  
RETAINING WALLS ASSOCIATED WITH  
BUILDINGS TO BE INCORPORATED INTO  
STRUCTURAL DESIGN



# RETAINING PLAN

SCALE 1:500

AMENDMENTS	DATE	ISSUE
DA ISSUE	25.10.2023	A

**GEOFF METZLER & ASSOCIATES** PTY LTD  
CONSULTING STRUCTURAL & CIVIL ENGINEERS

SHOP 12, 97 PRINCES HIGHWAY MILTON NSW 2538  
P: 02 4455 5515  
EMAIL [office@metzler.com.au](mailto:office@metzler.com.au) | ABN 87 002 408 237  
BATEMANS BAY - P: 02 4455 5515 | BEGA - P: 02 4455 5515

**PROJECT - EDMISTON JONES**  
ADDRESS - 108-114 RAWLINSON STREET, BEGA

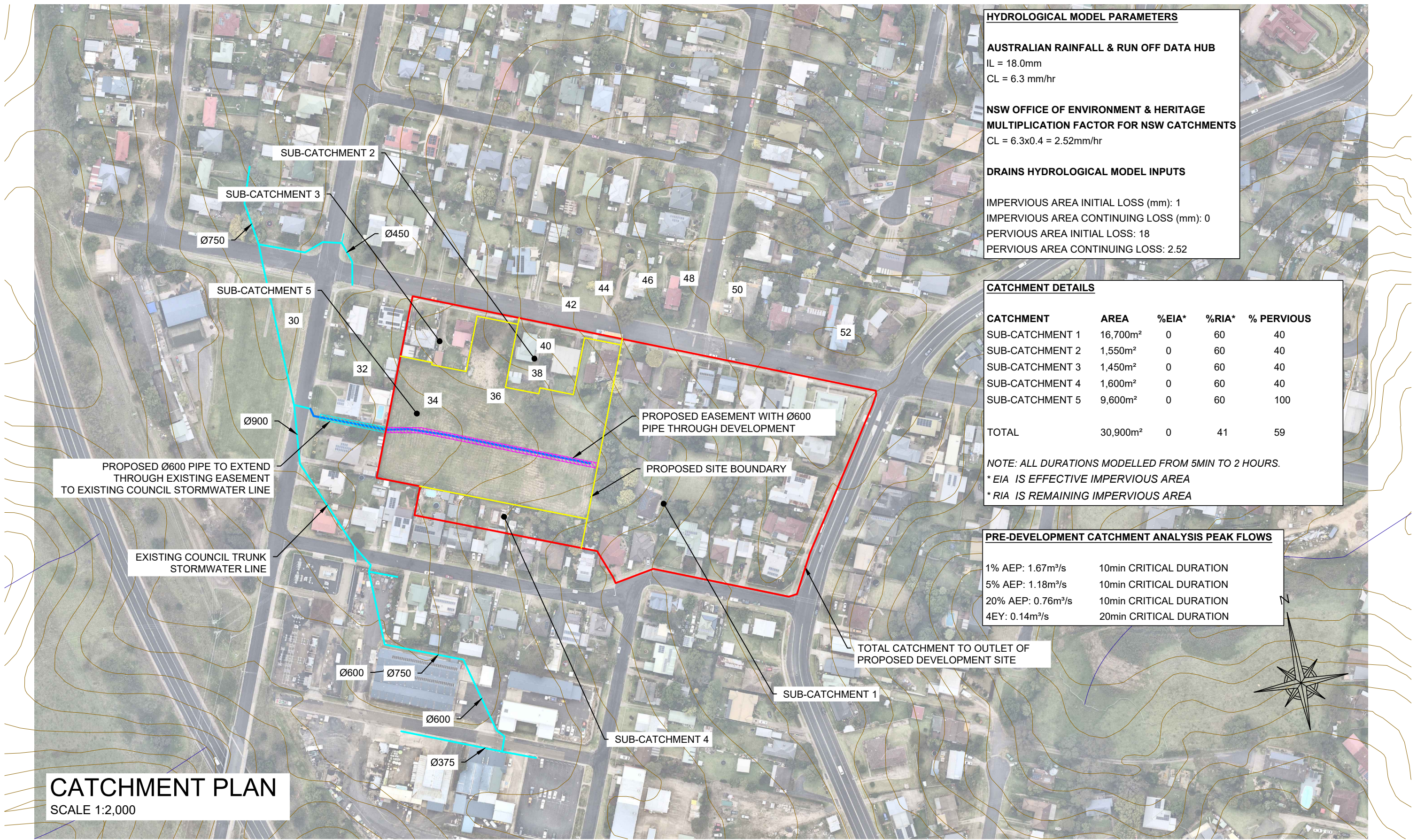
**DRAWING - RETAINING PLAN**  
JOB NO - **M10487** Sheet No - 10

APPROVED - JACK METZLER - B.E. MIE. AUST. C.P. ENG.

SCALE:  
AS SHOWN @ A3  
DRAWN BY:  
BC

REVISION  
**A**





**HYDROLOGICAL MODEL PARAMETERS**

**AUSTRALIAN RAINFALL & RUN OFF DATA HUB**  
IL = 18.0mm  
CL = 6.3 mm/hr

**NSW OFFICE OF ENVIRONMENT & HERITAGE**  
**MULTIPLICATION FACTOR FOR NSW CATCHMENTS**  
CL = 6.3x0.4 = 2.52mm/hr

**DRAINS HYDROLOGICAL MODEL INPUTS**

IMPERVIOUS AREA INITIAL LOSS (mm): 1  
IMPERVIOUS AREA CONTINUING LOSS (mm): 0  
PERVIOUS AREA INITIAL LOSS: 18  
PERVIOUS AREA CONTINUING LOSS: 2.52

CATCHMENT DETAILS				
CATCHMENT	AREA	%EIA*	%RIA*	% PERVIOUS
SUB-CATCHMENT 1	16,700m²	0	60	40
SUB-CATCHMENT 2	1,550m²	0	60	40
SUB-CATCHMENT 3	1,450m²	0	60	40
SUB-CATCHMENT 4	1,600m²	0	60	40
SUB-CATCHMENT 5	9,600m²	0	60	100
TOTAL	30,900m²	0	41	59

NOTE: ALL DURATIONS MODELLED FROM 5MIN TO 2 HOURS.  
\* EIA IS EFFECTIVE IMPERVIOUS AREA  
\* RIA IS REMAINING IMPERVIOUS AREA

PRE-DEVELOPMENT CATCHMENT ANALYSIS PEAK FLOWS	
1% AEP: 1.67m³/s	10min CRITICAL DURATION
5% AEP: 1.18m³/s	10min CRITICAL DURATION
20% AEP: 0.76m³/s	10min CRITICAL DURATION
4EY: 0.14m³/s	20min CRITICAL DURATION

**CATCHMENT PLAN**  
SCALE 1:2,000

AMENDMENTS	DATE	ISSUE
DA ISSUE	25.10.2023	A
EASEMENT AMENDMENT	22.01.2025	B

**GEOFF METZLER & ASSOCIATES** PTY LTD  
CONSULTING STRUCTURAL & CIVIL ENGINEERS

SHOP 12, 97 PRINCES HIGHWAY MILTON NSW 2538  
P: 02 4455 5515  
EMAIL [office@metzler.com.au](mailto:office@metzler.com.au) | ABN 87 002 408 237  
BATEMANS BAY - P: 02 4455 5515 | BEGA - P: 02 4455 5515

**PROJECT - EDMISTON JONES**

ADDRESS - 108-114 RAWLINSON STREET, BEGA

**DRAWING - CATCHMENT PLAN**

JOB NO - **M10487** Sheet No - 11

APPROVED - JACK METZLER - B.E. MIE. AUST. C.P. ENG.

SCALE:  
AS SHOWN @ A3  
DRAWN BY:  
BC

REVISION  
**B**



- WATER RE-USE REQUIREMENTS**
- 60,000L STORAGE
  - COLLECTION FROM MIN. 1,140m2 OF ROOF AREA
  - IRRIGATION OF MIN. 100m2 OF COMMON LANDSCAPED AREA
  - 1 x CAR WASH BAY

DEVELOPMENT CATCHMENT ANALYSIS PEAK FLOWS			
	PRE	POST	DIFFERENCE
1% AEP 10min CRITICAL DURATION (m³/s)	1.67	1.89	+0.22
5% AEP 10min CRITICAL DURATION (m³/s)	1.18	1.18	0.0
20% AEP 10min CRITICAL DURATION (m³/s)	0.76	0.77	+0.01
4EY 20min CRITICAL DURATION (m³/s)	0.14	0.16	+0.02

**NOTE:**

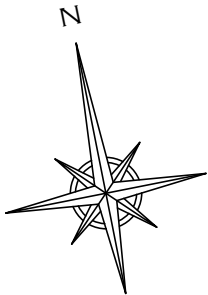
THE PROPOSED DEVELOPMENT HAS A NEGLIGIBLE IMPACT ON PEAK FLOWS FOR EVENTS UP TO THE 5%AEP. CONTROLLING ROOFED WATER FOR THE 1%AEP IS CONSIDERED IMPRACTICAL FOR THE DESIGN OF ON SITE DETENTION. THE SMALL INCREASE IN 1% AEP PEAK FLOWS IS CONSIDERED AS SAFE TO DISCHARGE AS OVERLAND FLOW. REFER TO DRAINAGE PLAN FOR DETAILS.

**CATCHMENT PLAN LEGEND**

ROOF

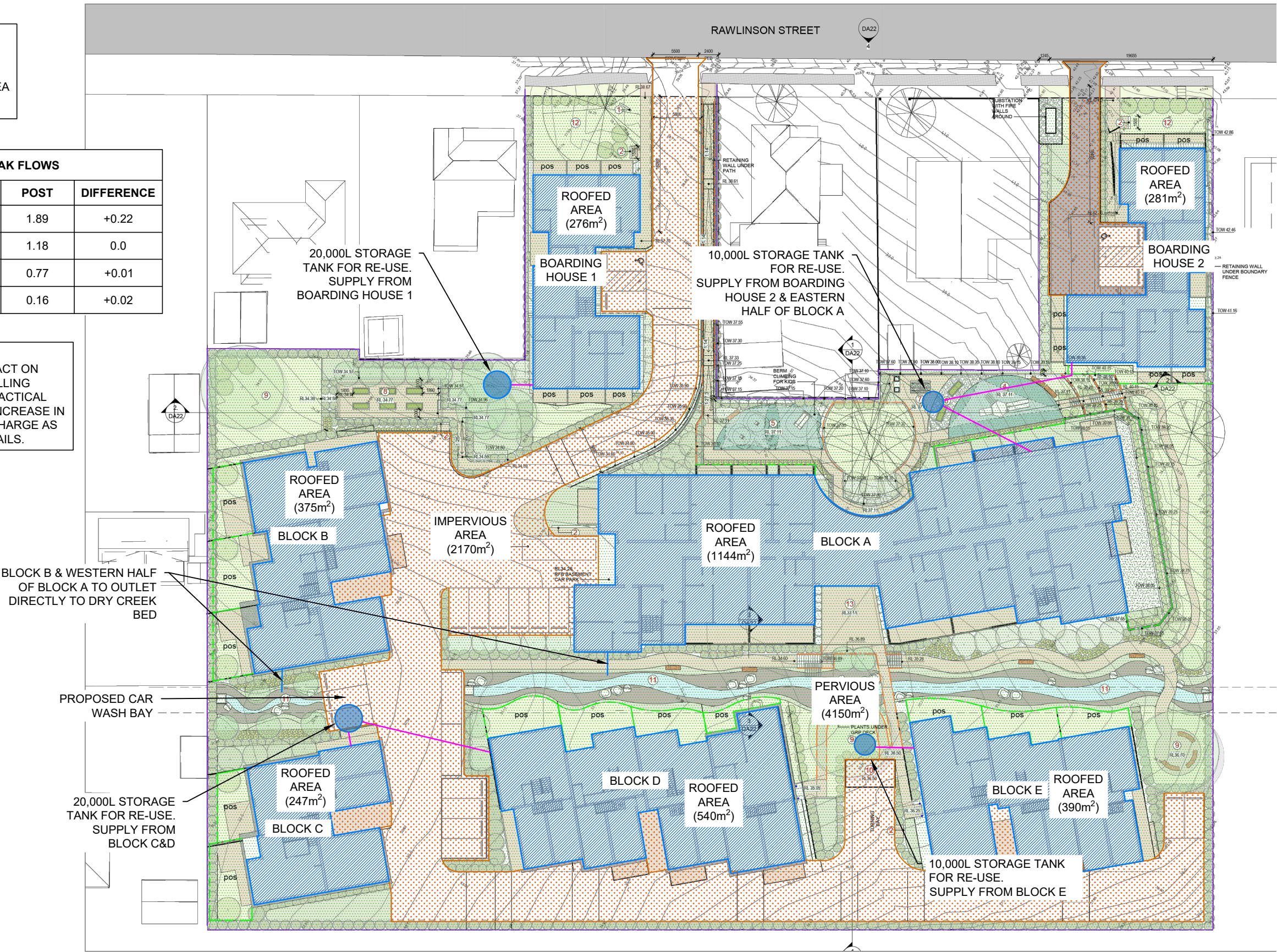
IMPERVIOUS

PERVIOUS



STORMWATER PLAN

SCALE 1:500



AMENDMENTS	DATE	ISSUE
DA ISSUE	25.10.2023	A

**GEOFF METZLER & ASSOCIATES** PTY LTD  
CONSULTING STRUCTURAL & CIVIL ENGINEERS

SHOP 12, 97 PRINCES HIGHWAY MILTON NSW 2538  
P: 02 4455 5515  
EMAIL [office@metzler.com.au](mailto:office@metzler.com.au) | ABN 87 002 408 237  
BATEMANS BAY - P: 02 4455 5515 | BEGA - P: 02 4455 5515

PROJECT - **EDMISTON JONES**

ADDRESS - 108-114 RAWLINSON STREET, BEGA

DRAWING - **STORMWATER PLAN**

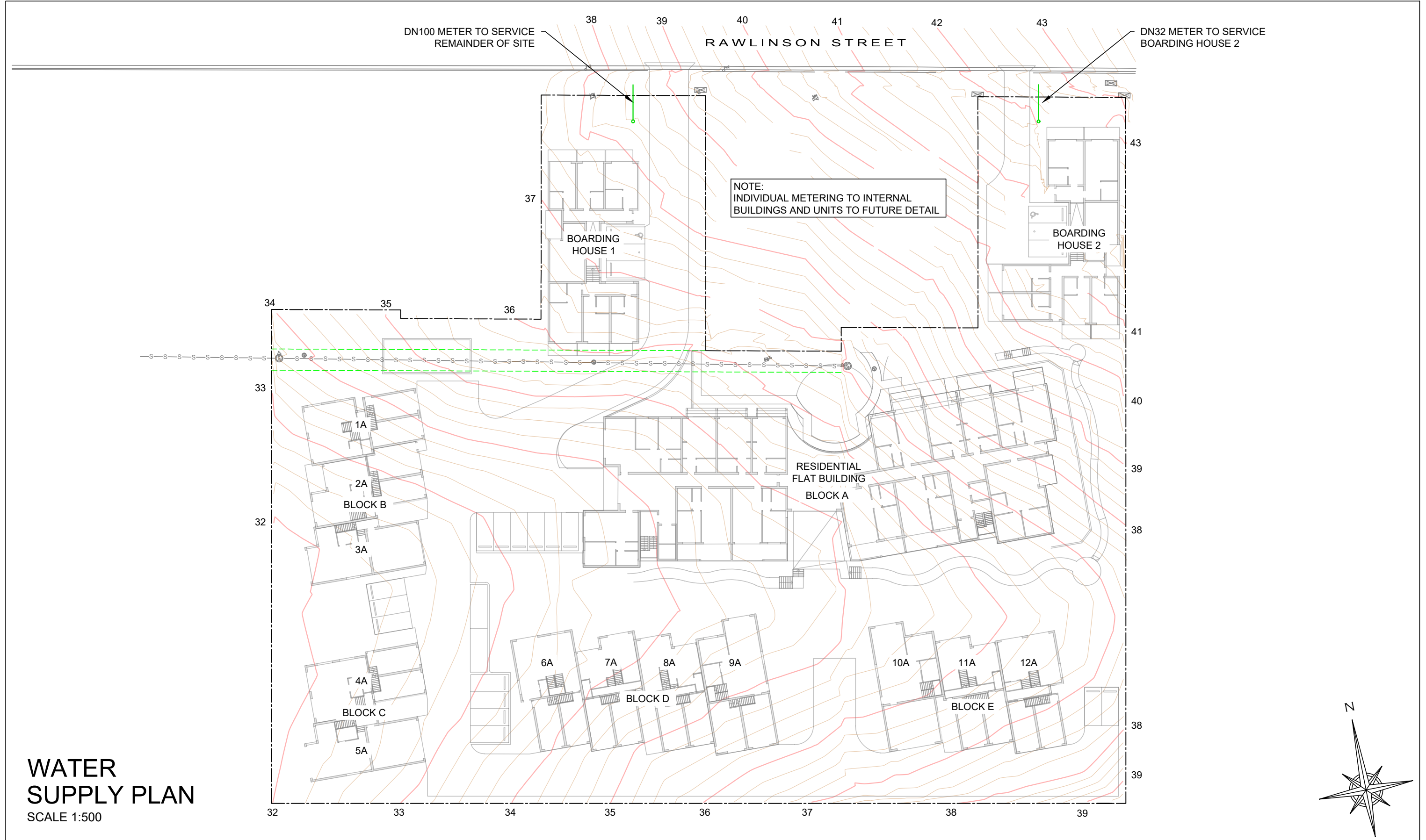
JOB NO - **M10487** Sheet No - 12

APPROVED - JACK METZLER - B.E. MIE. AUST. C.P. ENG.

SCALE:  
AS SHOWN @ A3  
DRAWN BY:  
BC

REVISION  
**A**





**WATER  
SUPPLY PLAN**  
SCALE 1:500

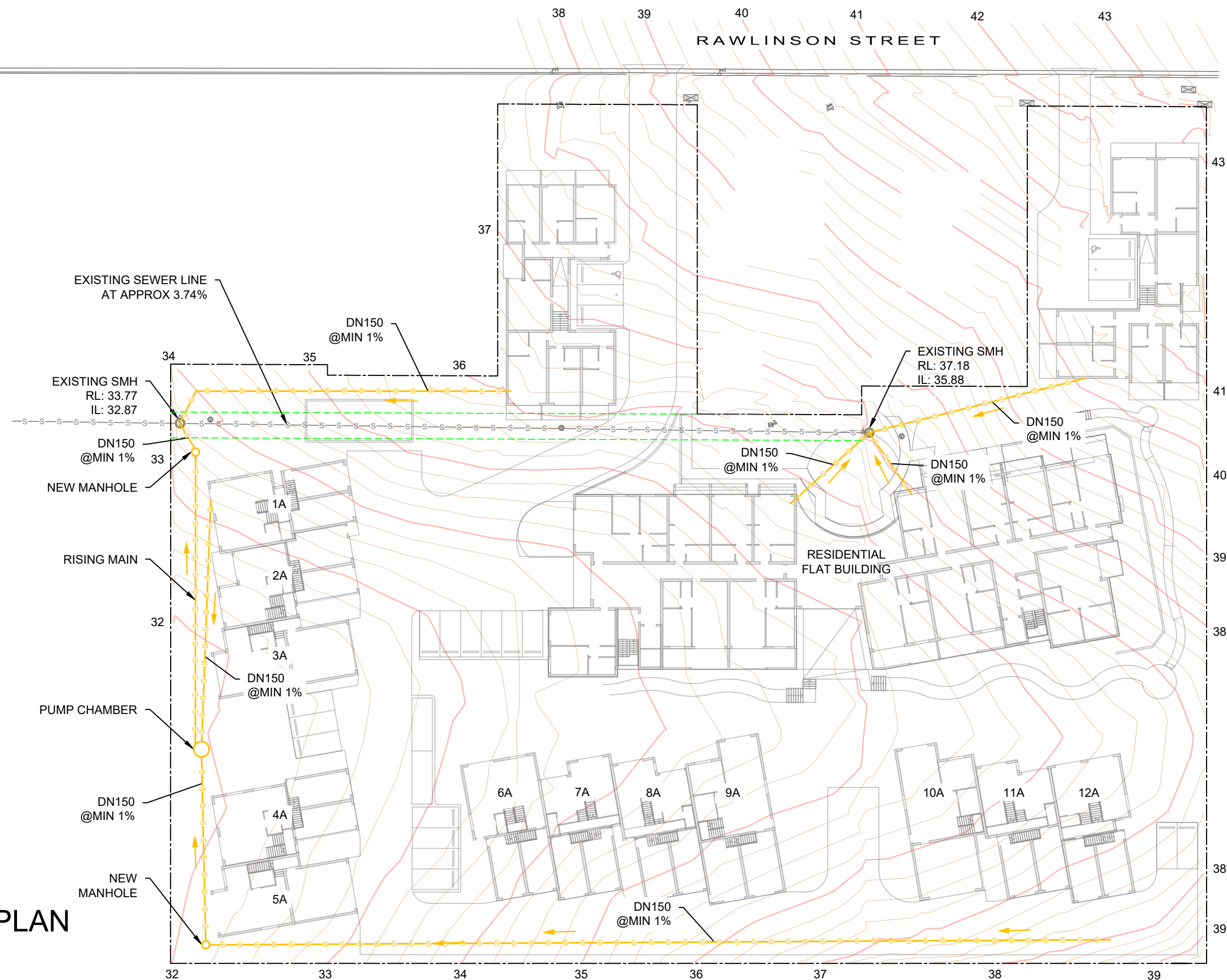
AMENDMENTS	DATE	ISSUE
DA ISSUE	25.10.2023	A

**GEOFF METZLER & ASSOCIATES** PTY LTD  
CONSULTING STRUCTURAL & CIVIL ENGINEERS

---

SHOP 12, 97 PRINCES HIGHWAY MILTON NSW 2538  
P: 02 4455 5515  
EMAIL [office@metzler.com.au](mailto:office@metzler.com.au) | ABN 87 002 408 237  
BATEMANS BAY - P: 02 4455 5515 | BEGA - P: 02 4455 5515

PROJECT - <b>EDMISTON JONES</b>		
ADDRESS - 108-114 RAWLINSON STREET, BEGA		
DRAWING - <b>WATER SUPPLY PLAN</b>		SCALE: AS SHOWN @ A3
JOB NO - <b>M10487</b> Sheet No - 14		DRAWN BY: BC
APPROVED - JACK METZLER - B.E. MIE. AUST. C.P. ENG.		REVISION <b>A</b>



# SEWER PLAN

SCALE 1:500

AMENDMENTS	DATE	ISSUE
DA ISSUE	25.10.2023	A

## GEOFF METZLER & ASSOCIATES PTY LTD

CONSULTING STRUCTURAL & CIVIL ENGINEERS

SHOP 12, 97 PRINCES HIGHWAY MILTON NSW 2538  
P: 02 4455 5515  
EMAIL [office@metzler.com.au](mailto:office@metzler.com.au) | ABN 87 002 408 237  
BATEMANS BAY - P: 02 4455 5515 | BEGA - P: 02 4455 5515

## PROJECT - EDMISTON JONES

ADDRESS - 108-114 RAWLINSON STREET, BEGA

## DRAWING - SEWER PLAN

JOB NO - M10487 Sheet No - 15

APPROVED - JACK METZLER - B.E. MIE. AUST. C.P. ENG.

SCALE:  
AS SHOWN @ A3  
DRAWN BY:  
BC

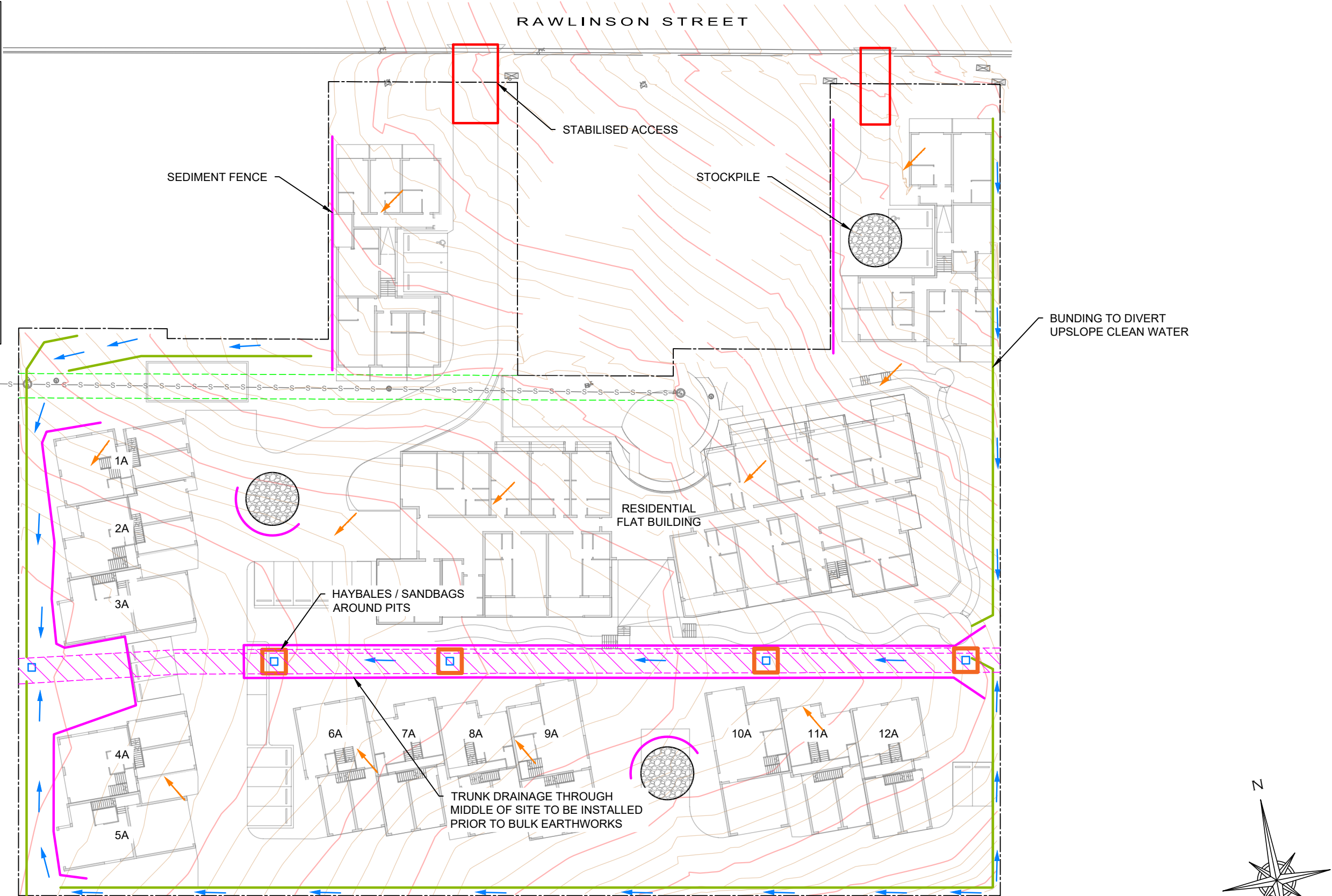
REVISION

A



**LEGEND:**

- EARTH BUND
- SEDIMENT FENCE
- HAY BALES
- STABILISED ACCESS
- 900x900 GRATED PITS
- STOCKPILE
- CLEAN WATER
- SEDIMENT LADDEN WATER



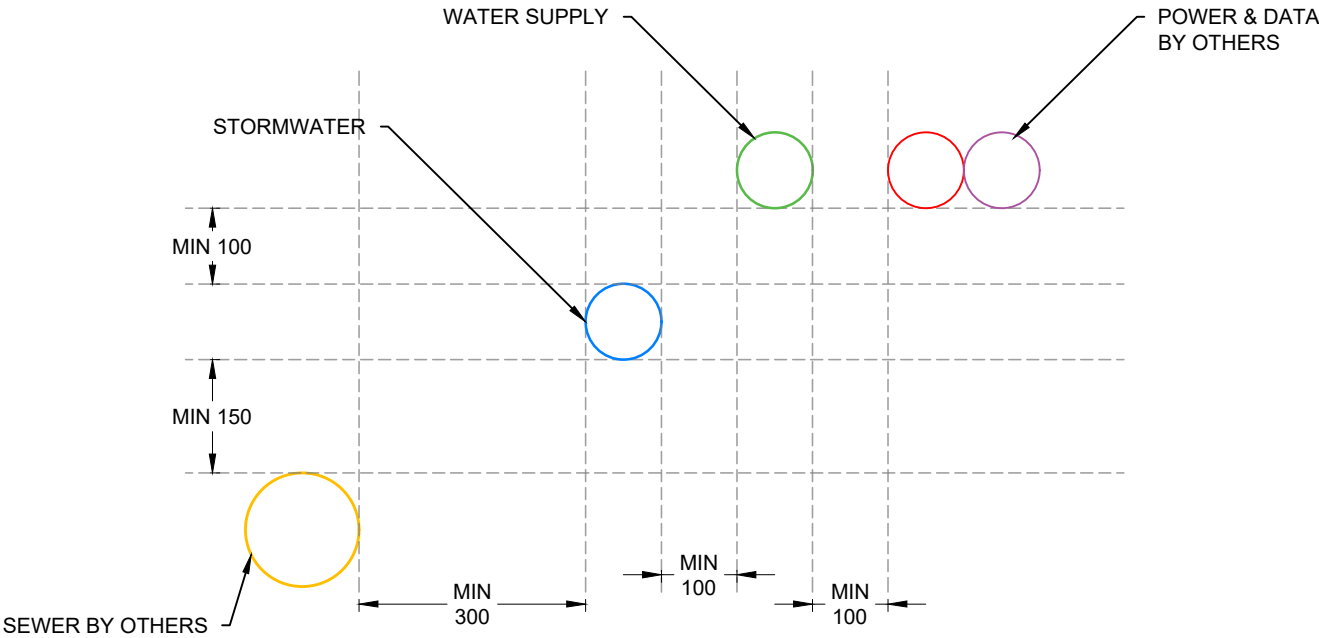
**EROSION & SEDIMENT CONTROL PLAN**  
SCALE 1:500

AMENDMENTS	DATE	ISSUE
DA ISSUE	25.10.2023	A

**GEOFF METZLER & ASSOCIATES** PTY LTD  
CONSULTING STRUCTURAL & CIVIL ENGINEERS

SHOP 12, 97 PRINCES HIGHWAY MILTON NSW 2538  
P: 02 4455 5515  
EMAIL [office@metzler.com.au](mailto:office@metzler.com.au) | ABN 87 002 408 237  
BATEMANS BAY - P: 02 4455 5515 | BEGA - P: 02 4455 5515

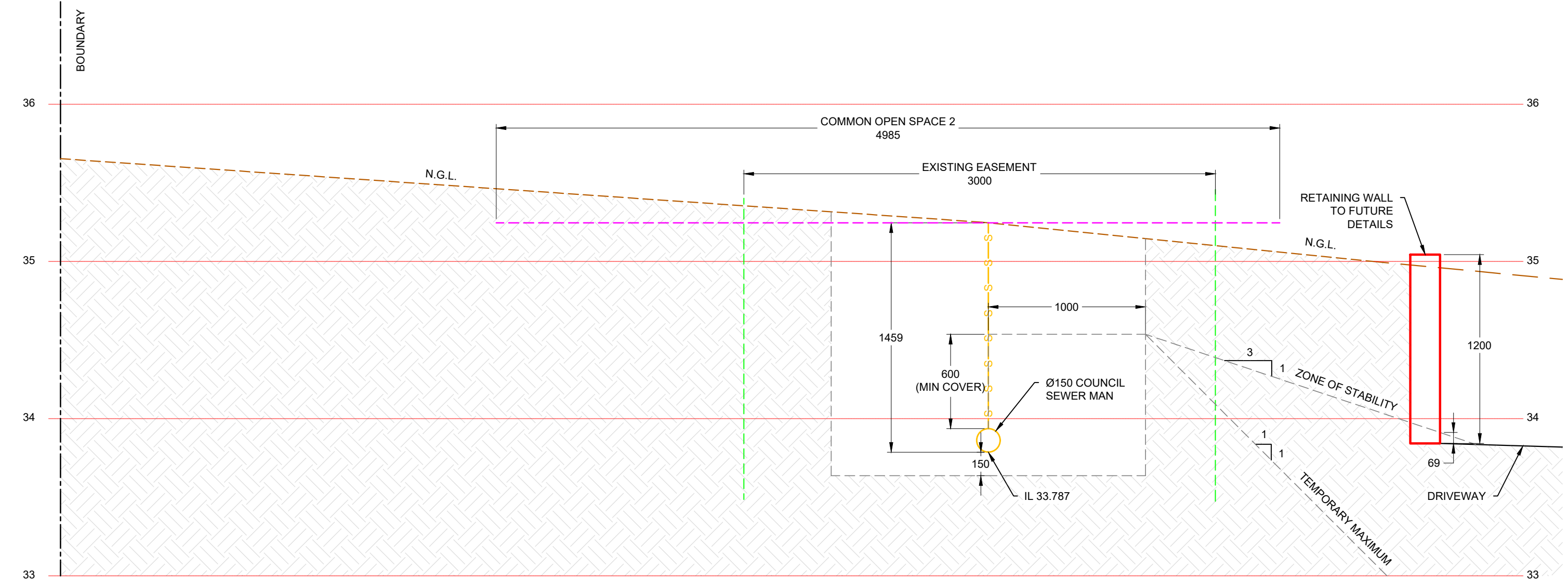
PROJECT - EDMISTON JONES			
ADDRESS - 108-114 RAWLINSON STREET, BEGA			
DRAWING - EROSION & SEDIMENT CONTROL PLAN		SCALE: AS SHOWN @ A3	REVISION  A
JOB NO - M10487    Sheet No - 16		DRAWN BY: BC	
APPROVED - JACK METZLER - B.E. MIE. AUST. C.P. ENG.			



TYPICAL SHARED SERVICES TRENCH  
(SERVICE SPACING)  
SCALE 1:10

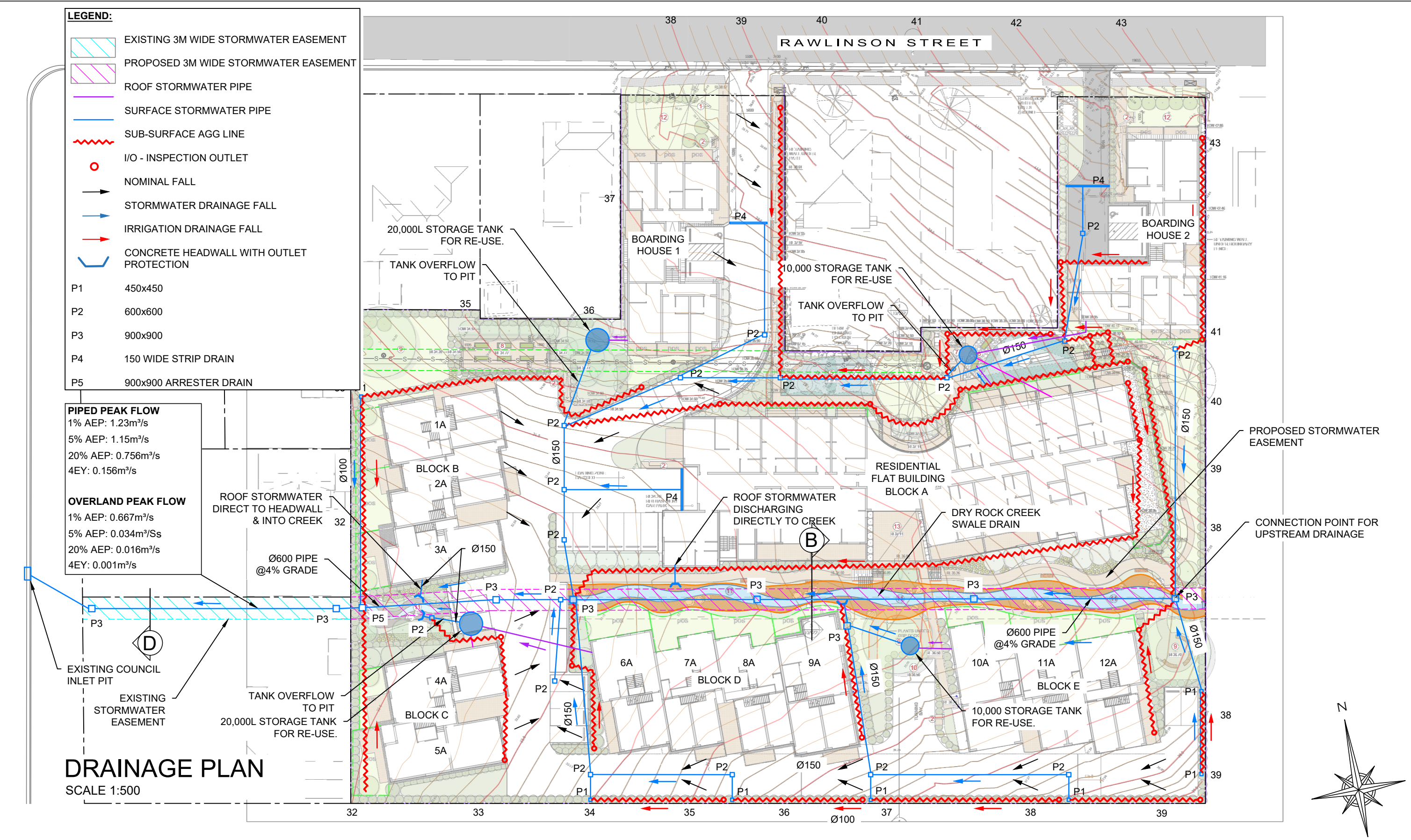
AMENDMENTS	DATE	ISSUE	<div>GEOFF METZLER &amp; ASSOCIATES PTY LTD</div> <div>CONSULTING STRUCTURAL &amp; CIVIL ENGINEERS</div> <div>SHOP 12, 97 PRINCES HIGHWAY MILTON NSW 2538</div> <div>P: 02 4455 5515</div> <div>EMAIL <a href="mailto:office@metzler.com.au">office@metzler.com.au</a>   ABN 87 002 408 237</div> <div>BATEMANS BAY - P: 02 4455 5515   BEGA - P: 02 4455 5515</div>			PROJECT - EDMISTON JONES		
DA ISSUE	25.10.2023	A				ADDRESS - 108-114 RAWLINSON STREET, BEGA		
						DRAWING - SHARED SERVICES DETAIL		
						JOB NO - M10487 Sheet No - 17		
						APPROVED - JACK METZLER - B.E. MIE. AUST. C.P. ENG.		
						SCALE: AS SHOWN @ A3 DRAWN BY: BC	REVISION	
								A





SECTION A  
SCALE 1:25

AMENDMENTS		DATE	ISSUE	<div><div>GEOFF METZLER &amp; ASSOCIATES</div><div>CONSULTING STRUCTURAL &amp; CIVIL ENGINEERS</div><div>SHOP 12, 97 PRINCES HIGHWAY MILTON NSW 2538</div><div>P: 02 4455 5515</div><div>EMAIL <a href="mailto:office@metzler.com.au">office@metzler.com.au</a>   ABN 87 002 408 237</div><div>BATEMANS BAY - P: 02 4455 5515   BEGA - P: 02 4455 5515</div></div>		PROJECT - EDMISTON JONES		SCALE: AS SHOWN @ A3 DRAWN BY: BC		REVISION <div>A</div>
DA ISSUE		25.10.2023	A			ADDRESS - 108-114 RAWLINSON STREET, BEGA				
						DRAWING - SECTION A				
						JOB NO - M10487 Sheet No - 18				
						APPROVED - JACK METZLER - B.E. MIE. AUST. C.P. ENG.				



AMENDMENTS	DATE	ISSUE
DA ISSUE	25.10.2023	A
EASEMENT AMENDMENT	22.01.2025	B

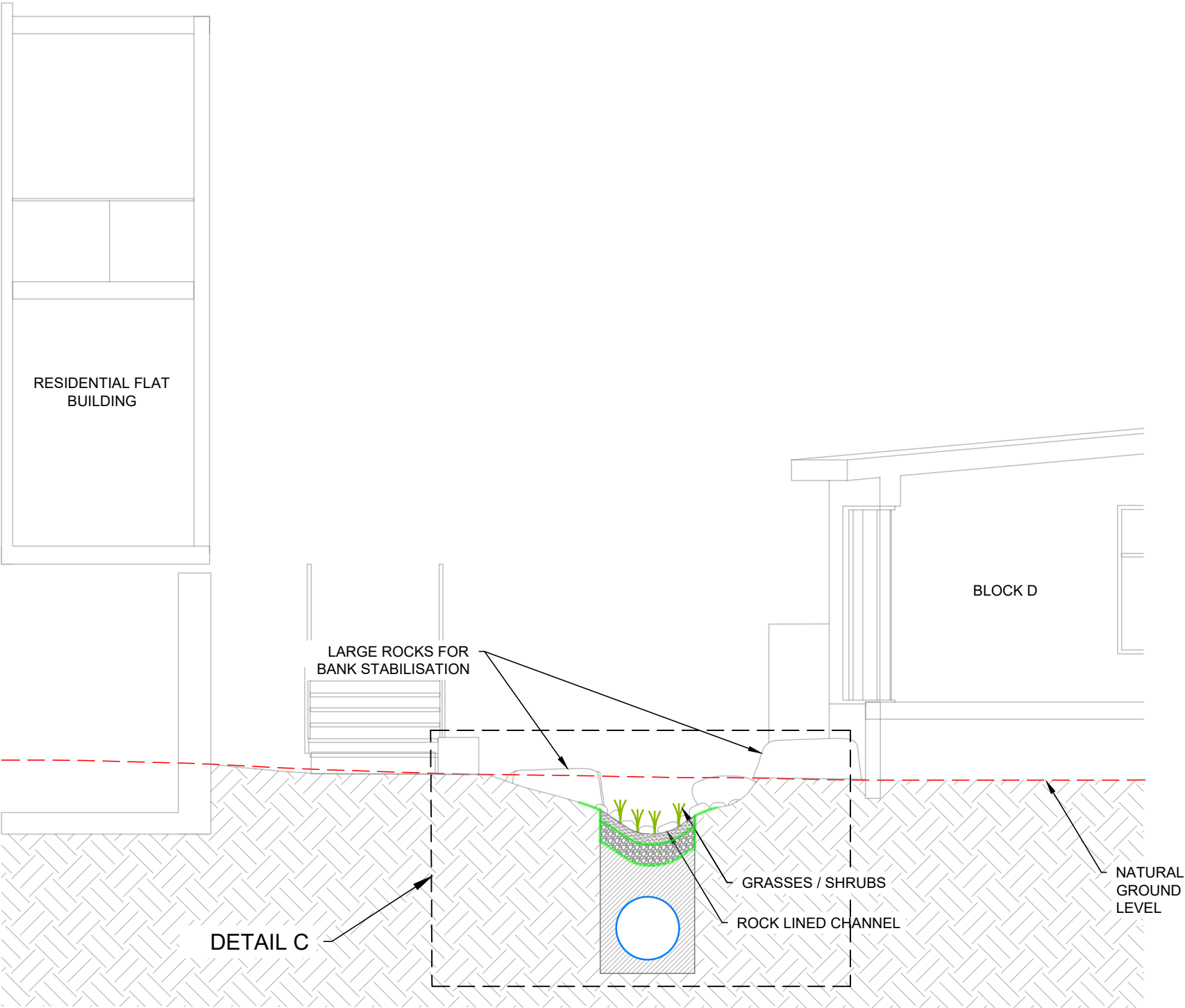
**GEOFF METZLER & ASSOCIATES** PTY LTD  
CONSULTING STRUCTURAL & CIVIL ENGINEERS

SHOP 12, 97 PRINCES HIGHWAY MILTON NSW 2538  
P: 02 4455 5515

EMAIL [office@metzler.com.au](mailto:office@metzler.com.au) | ABN 87 002 408 237  
BATEMANS BAY - P: 02 4455 5515 | BEGA - P: 02 4455 5515

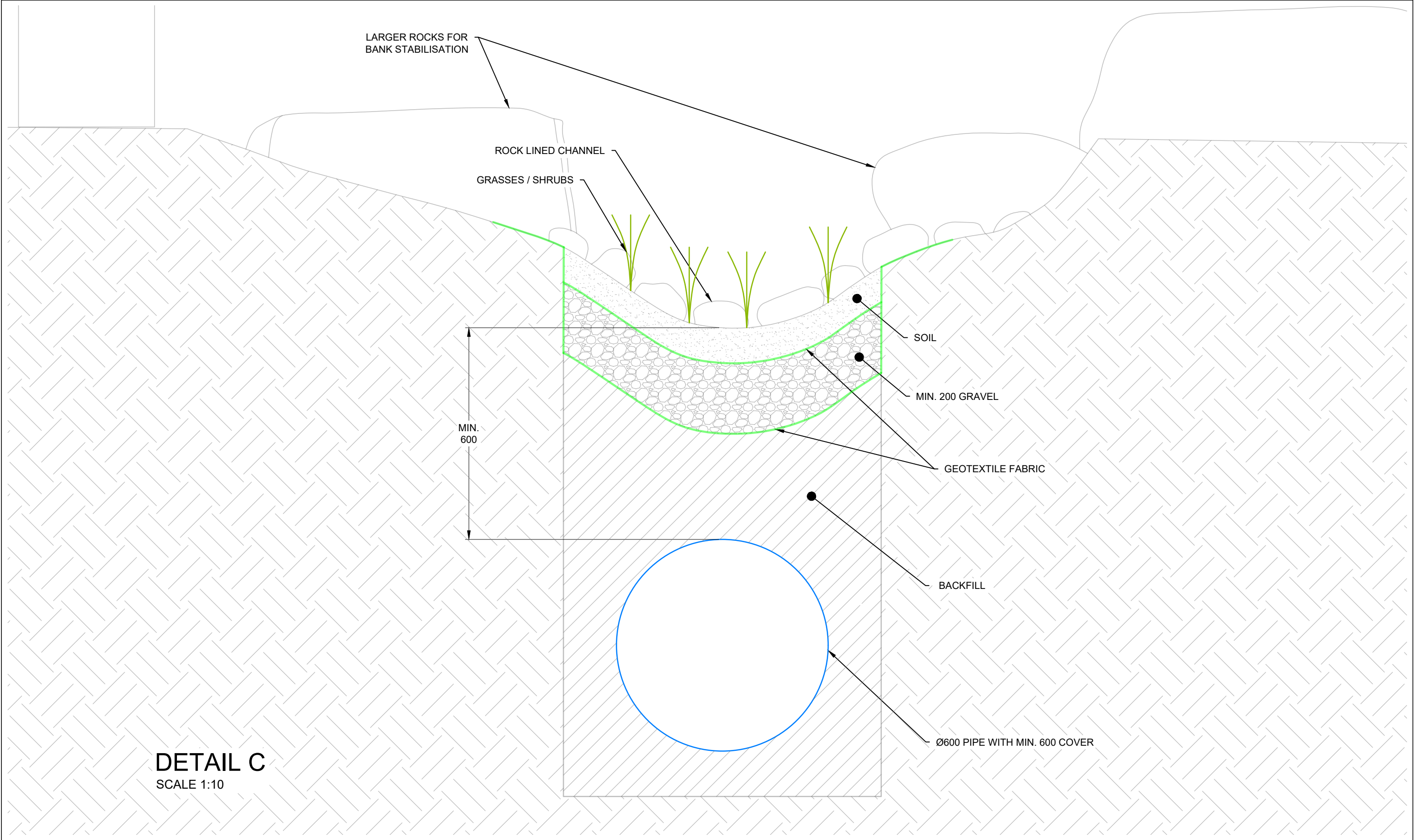
PROJECT - EDMISTON JONES		
ADDRESS - 108-114 RAWLINSON STREET, BEGA		
DRAWING - DRAINAGE PLAN	SCALE: AS SHOWN @ A3 DRAWN BY: BC	REVISION  B
JOB NO - M10487    Sheet No - 19		
APPROVED - JACK METZLER - B.E. MIE. AUST. C.P. ENG.		





SECTION B: DRY ROCK CREEK SWALE  
SCALE 1:50

AMENDMENTS	DATE	ISSUE	<div><div>GEOFF METZLER &amp; ASSOCIATES PTY LTD</div><div>CONSULTING STRUCTURAL &amp; CIVIL ENGINEERS</div><div></div><div>SHOP 12, 97 PRINCES HIGHWAY MILTON NSW 2538</div><div>P: 02 4455 5515</div><div>EMAIL <a href="mailto:office@metzler.com.au">office@metzler.com.au</a>   ABN 87 002 408 237</div><div>BATEMANS BAY - P: 02 4455 5515   BEGA - P: 02 4455 5515</div></div>	PROJECT - EDMISTON JONES		
EASEMENT AMENDMENT	22.01.2025	B		ADDRESS - 108-114 RAWLINSON STREET, BEGA		
				DRAWING - SECTION B - DRY CREEK SWALE	SCALE: AS SHOWN @ A3	REVISION  B
				JOB NO - M10487	Sheet No - 19	
				APPROVED - JACK METZLER - B.E. MIE. AUST. C.P. ENG.		



DETAIL C  
SCALE 1:10

AMENDMENTS	DATE	ISSUE
EASEMENT AMENDMENT	22.01.2025	B

GEOFF METZLER & ASSOCIATES PTY LTD  
CONSULTING STRUCTURAL & CIVIL ENGINEERS

SHOP 12, 97 PRINCES HIGHWAY MILTON NSW 2538  
P: 02 4455 5515  
EMAIL [office@metzler.com.au](mailto:office@metzler.com.au) | ABN 87 002 408 237  
BATEMANS BAY - P: 02 4455 5515 | BEGA - P: 02 4455 5515

PROJECT - EDMISTON JONES  
ADDRESS - 108-114 RAWLINSON STREET, BEGA

DRAWING - DETAIL C

JOB NO - M10487 Sheet No - 20

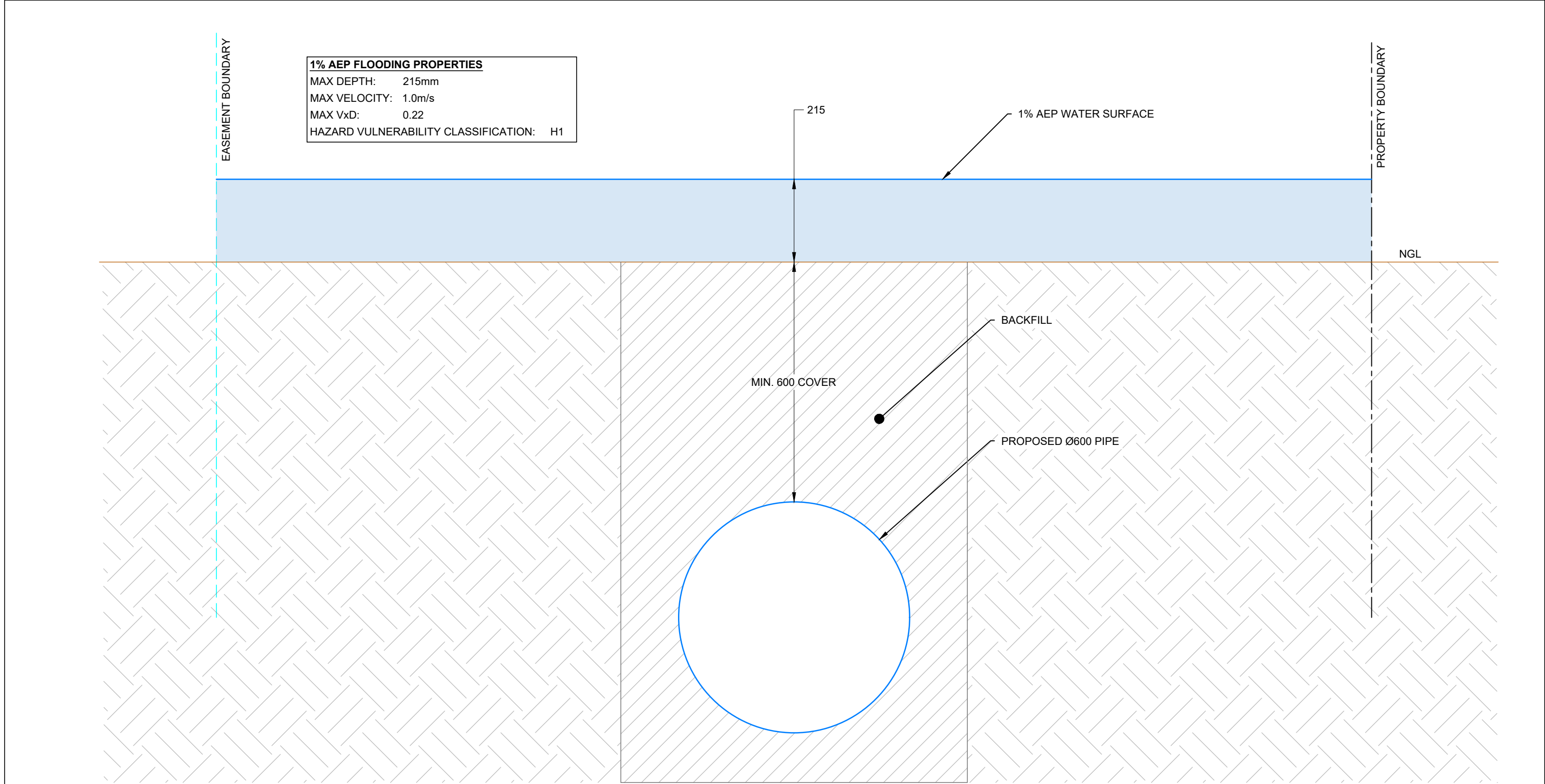
APPROVED - JACK METZLER - B.E. MIE. AUST. C.P. ENG.

SCALE:  
AS SHOWN @ A3  
DRAWN BY:  
BC

REVISION

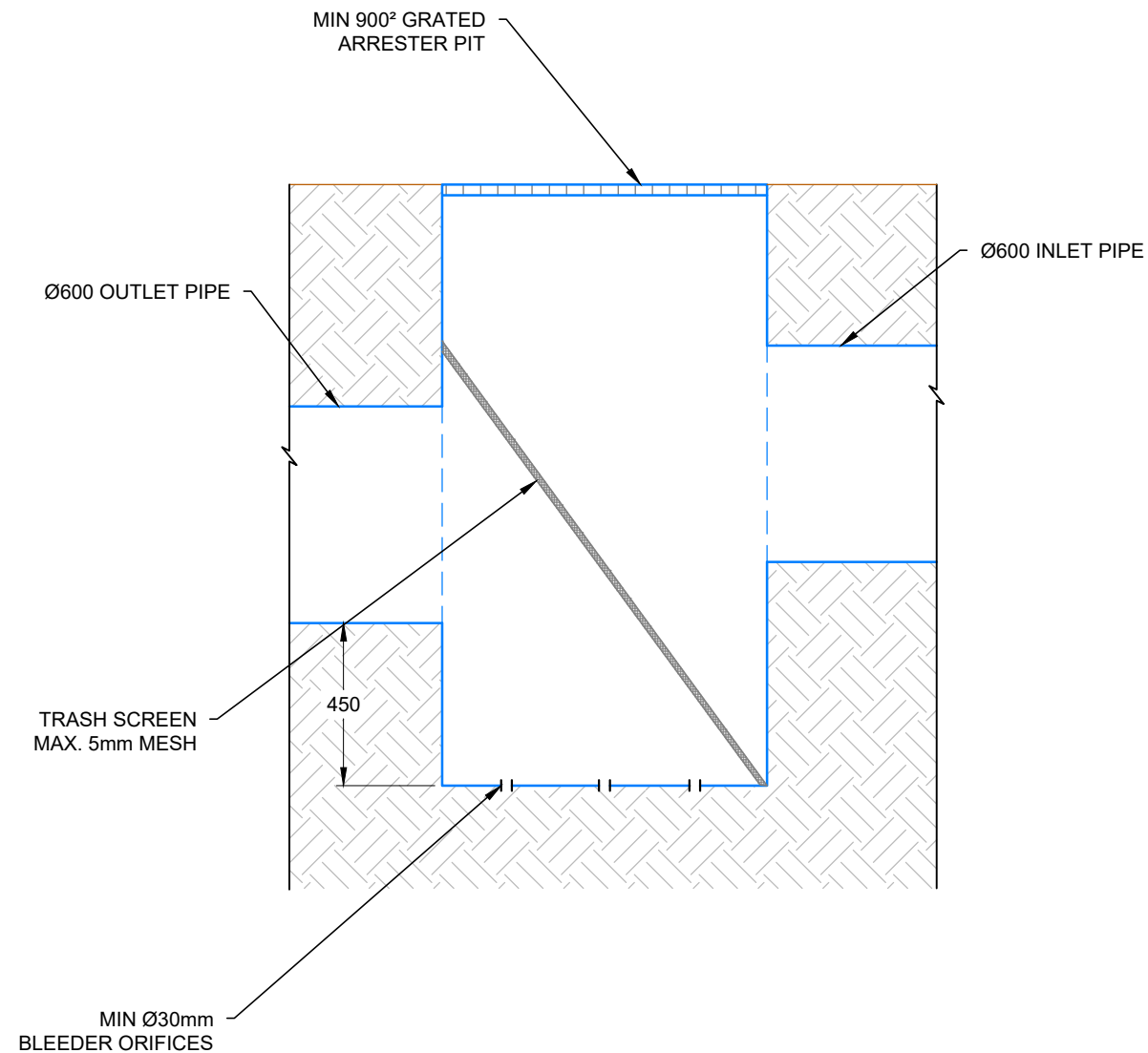
B





SECTION D  
SCALE 1:10

AMENDMENTS	DATE	ISSUE	<div><div>GEOFF METZLER &amp; ASSOCIATES PTY LTD</div><div>CONSULTING STRUCTURAL &amp; CIVIL ENGINEERS</div><div>SHOP 12, 97 PRINCES HIGHWAY MILTON NSW 2538</div><div>P: 02 4455 5515</div><div>EMAIL <a href="mailto:office@metzler.com.au">office@metzler.com.au</a>   ABN 87 002 408 237</div><div>BATEMANS BAY - P: 02 4455 5515   BEGA - P: 02 4455 5515</div></div>	PROJECT - EDMISTON JONES			
EASEMENT AMENDMENT	22.01.2025	B		ADDRESS - 108-114 RAWLINSON STREET, BEGA			
				DRAWING - SECTION D		SCALE: AS SHOWN @ A3 DRAWN BY: BC	REVISION  B
				JOB NO - M10487 Sheet No - 21			
				APPROVED - JACK METZLER - B.E. MIE. AUST. C.P. ENG.			



SECTION E  
SCALE 1:20

AMENDMENTS	DATE	ISSUE	<div><div>GEOFF METZLER &amp; ASSOCIATES <small>PTY LTD</small></div><div>CONSULTING STRUCTURAL &amp; CIVIL ENGINEERS</div><div>SHOP 12, 97 PRINCES HIGHWAY MILTON NSW 2538 P: 02 4455 5515 EMAIL <a href="mailto:office@metzler.com.au">office@metzler.com.au</a>   ABN 87 002 408 237 BATEMANS BAY - P: 02 4455 5515   BEGA - P: 02 4455 5515</div></div>	PROJECT - EDMISTON JONES			SCALE: AS SHOWN @ A3 DRAWN BY: BC	REVISION <div>B</div>
EASEMENT AMENDMENT	22.01.2025	B		ADDRESS - 108-114 RAWLINSON STREET, BEGA				
				DRAWING - SECTION E				
				JOB NO - M10487 Sheet No - 22				
				APPROVED - JACK METZLER - B.E. MIE. AUST. C.P. ENG.				